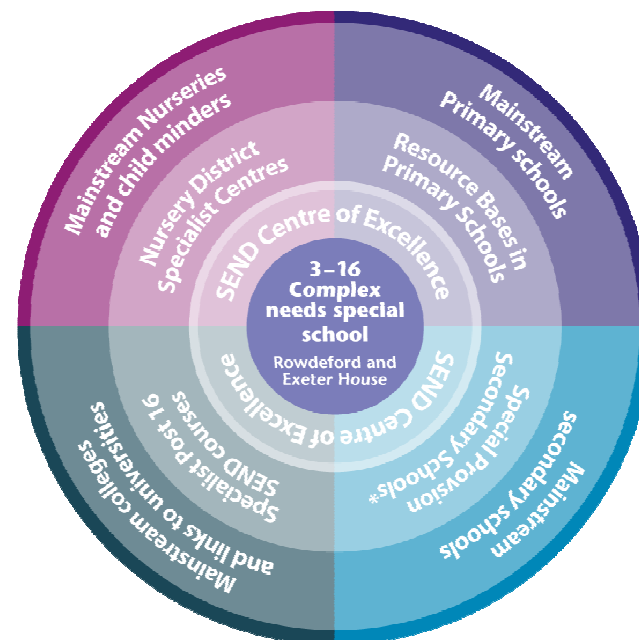




Special Schools in Wiltshire

The Vision

- We propose an investment of around £20m to create two new Centres of Excellence – purpose-built and amply equipped schools, giving our children a better start in life than ever before.
- The new campuses would be at Rowdeford, near Devizes, and Exeter House, Salisbury.
- The vision for SEND in Wiltshire will mean St Nicholas, Chippenham, and Larkrise, Trowbridge will stay open until we open the new school in September 2023



Background Drivers

- **Growth** in numbers of children/young people with SEND (Special Educational Needs and Disabilities)
- **Quality** – we have no “Outstanding” provision
- The **current provision is not big enough** (DfE standards, equipment, resources, outdoor spaces, spaces for therapists)
- There are significant and growing **financial pressures**
- Preparing and creating provision for the future to... **give our children and young people with SEND the best possible start to life a great childhood and preparation for adult life.**

This enables:

- A campus model providing outstanding education
- Support to every child and young person with SEND in Wiltshire, including those who are hard to categorise
- Support to children and young people in mainstream settings, developing better outcomes for all children
- Support to early years settings and an integrated post-16 provision
- A provision which creates a national standard for special schools



The best provision for all children /young people

- Great teaching from well-trained, well-paid, caring, specialist and dedicated staff
- The right facilities and support: hydro-pools, sensory rooms, physio, open outdoor space, speech and language therapy, family care
- Strong community links – with cafés, community gardens and public playing fields
- Attractive, comfortable, child-scale buildings - safe, friendly, calm and engaging places with wide corridors, storage and lots of natural light
- Closer links between SEND and neighbouring mainstream schools. Each have resources the others can benefit from
- Links with specialist nurseries, offering children with special needs seamless attention from the time they are tots to their teenage years
- Both sites are on good road routes, central to the home locations of children and young people with SEND and with space to expand.